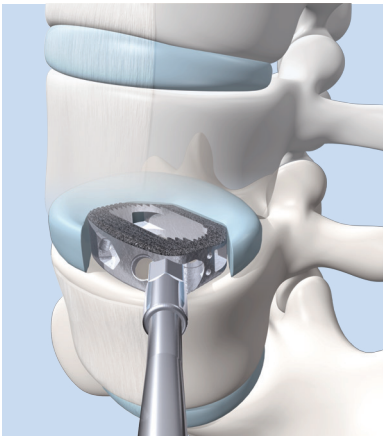
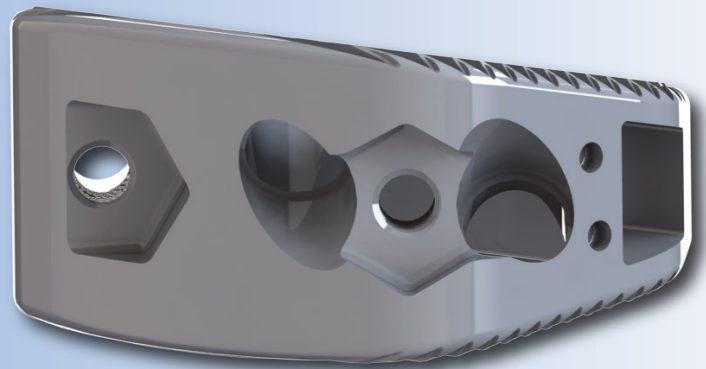


Versatile Anterolateral Option



Value for You & Your Patient

Spine surgeons count on Acuity Surgical's total support approach with the ALIGN System and other premiere evidenced-based solutions. Acuity has developed the ALIGN System to:

Provide an Alternative for Anterior Approaches

The ALIGN AOLIF interbody system provides an effective anterolateral approach to maximize options available to the surgeon when an alternative to a true anterior approach is required.

Support bone in-growth

The ALIGN System's design and porous structure improves adhesion to vertebral body endplates to support bone in-growth when used with allogenic bone graft and/or autograft to facilitate fusion.

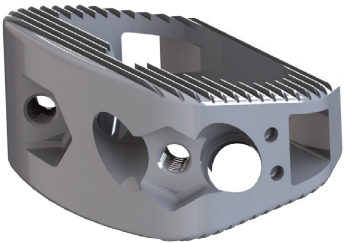
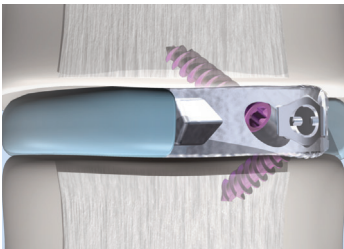
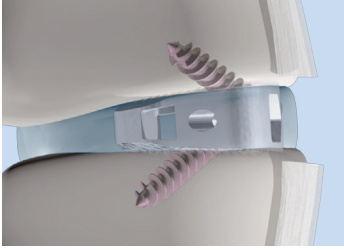


EACH SURGEON EVERY PATIENT
making total support a reality...again.



complete solutions for spine surgery

844.228.4890 | AcuitySurgical.com


FOOTPRINTS

Extra Small: 32 x 21

Small: 32 x 24

Large: 36 x 26

Extra Large: 38 x 30

All footprints available in 2-screw configurations
Features

Dual anterolateral insertion features

Enhanced porous structure

Simple instrumentation

Benefits

maximizes ability to place anterolateral implant across midline or directly anterolateral

increases bone in-growth to endplate

enhances surgeon efficiency with comfortable handles

Description

ALIGN is a spinal device that is implanted in the intervertebral body space via an anterior approach to improve stability of the spine while supporting fusion. Components are offered in different shapes and sizes to meet the requirements of the individual patient anatomy. Made from additively manufactured titanium alloy (Ti-6Al-4V ELI).

Indications

ALIGN anterolateral cages are indicated for intervertebral body fusion of the spine in skeletally mature patients who have had at least six months of non-operative treatment. The device systems are designed for use with allogenic bone graft comprised of cancellous and/or corticocancellous bone graft allograft and/or autograft to facilitate fusion. One device is used per intervertebral body space.

ALIGN anterolateral cages are intended for use at either one level or two contiguous levels in the lumbar spine, from L2 to S1, for the treatment of degenerative disc disease (DDD) with up to Grade I spondylolisthesis. DDD is defined as back pain of discogenic origin with degeneration of the disc confirmed by history and radiographic studies.

ALIGN anterolateral cages are intended to be used with supplemental spinal fixation system cleared for use in the lumbosacral spine.

About Acuity

Spine surgeons choose Acuity Surgical for spinal implant solutions. They know they can count on Acuity's unwavering commitment to world class customer support of its premiere lumbar, cervical, and biologic evidenced-based systems.

UNITARY TITANIUM STANDARD SIZES

Lordosis	Height									
20 deg	-	-	-	-	-	15	16	17	18	19
16 deg	-	11	12	13	14	15	16	17	18	19
12 deg	10	11	12	13	14	15	16	17	18	19
7 deg	10	11	12	13	14	15	16	17	-	-



complete solutions for spine surgery

 > Contact us to request the **ALIGN Surgical Technique Guide**

 844.228.4890 | support@AcuitySurgical.com | AcuitySurgical.com