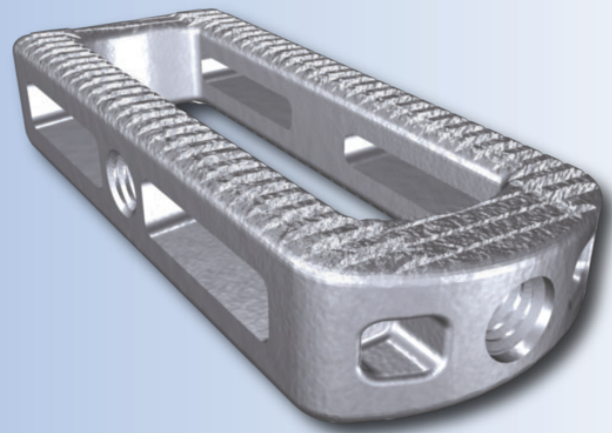


Strong Lateral Support



Value for You & Your Patient

Spine surgeons count on Acuity Surgical's total support approach with the ALIGN System and other premiere evidenced-based solutions. Acuity has developed the ALIGN System to:

Maximize patient options

The ALIGN lateral interbody system is provided in multiple footprints, heights, and lordotic angles to maximize the patient options available to the surgeon.

Support bone in-growth

The ALIGN System's design and porous structure improves adhesion to vertebral body endplates to support bone in-growth when used with allogenic bone graft and/or autograft to facilitate fusion.

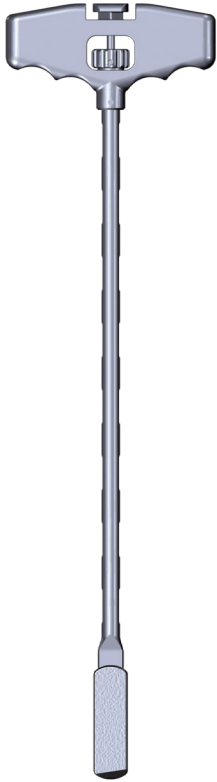


EACH SURGEON EVERY PATIENT
making total support a reality...again.



complete solutions for spine surgery

844.228.4890 | AcuitySurgical.com



Features	Benefits
Large graft window	maximizes volume of bone graft compared to anterior approach
Enhanced porous structure	increases bone in-growth to endplate
Simple instrumentation	enhances surgeon efficiency with comfortable handles

Description

ALIGN is a spinal device that is implanted in the intervertebral body space via an anterior approach to improve stability of the spine while supporting fusion. Components are offered in different shapes and sizes to meet the requirements of the individual patient anatomy. Made from additively manufactured titanium alloy (Ti-6Al-4V ELI).

Indications

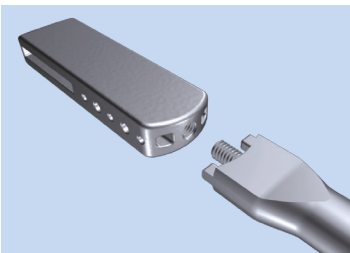
ALIGN lateral cages are indicated for intervertebral body fusion of the spine in skeletally mature patients who have had at least six months of non-operative treatment. The device systems are designed for use with allogenic bone graft comprised of cancellous and/or corticocancellous bone graft and/or autograft to facilitate fusion. One device is used per intervertebral body space.

ALIGN lateral cages are intended for use at either one level or two contiguous levels in the lumbar spine, from L2 to S1, for the treatment of degenerative disc disease (DDD) with up to Grade I spondylolisthesis. DDD is defined as back pain of discogenic origin with degeneration of the disc confirmed by history and radiographic studies.

ALIGN lateral cages are intended to be used with supplemental spinal fixation system cleared for use in the lumbosacral spine.

About Acuity

Spine surgeons choose Acuity Surgical for spinal implant solutions. They know they can count on Acuity's unwavering commitment to world class customer support of its premiere lumbar, cervical, and biologic evidenced-based systems.



LATERAL UNITARY TITANIUM STANDARD SIZES	
Lordosis	Height
12 deg	7 8 9 10 11 12 13 14 15 16 17
7 deg	7 8 9 10 11 12 13 14 15 16 17
Lengths	40 45 50 55 60

FOOTPRINTS

Extra Small: 14mm wide
 Small: 18mm wide
 Large: 22mm wide
 Extra Large: 26mm wide
All footprints available in additional lengths, heights, & lordosis upon request



complete solutions for spine surgery

> Contact us to request the **ALIGN Surgical Technique Guide**

844.228.4890 | support@AcuitySurgical.com | AcuitySurgical.com