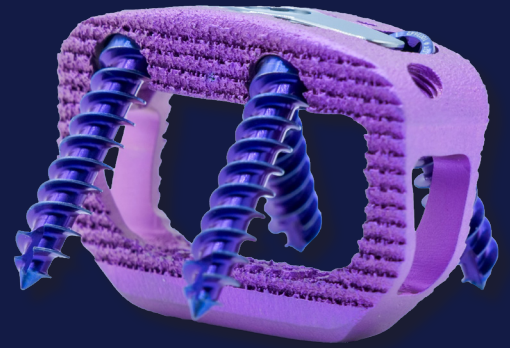


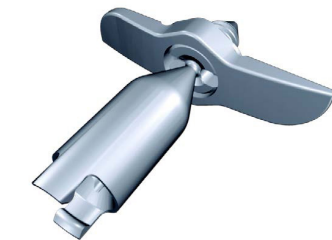
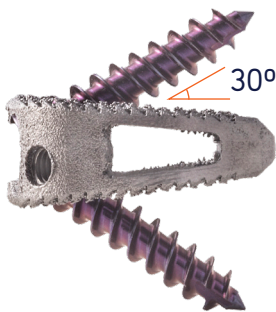
Ventris ALIF

STAND-ALONE ANTERIOR LUMBAR SYSTEM

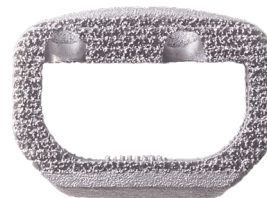


Ventris ALIF is a spinal device that is **implanted in the intervertebral body space via an anterior approach to improve the stability of the spine while supporting fusion**. Ventris ALIF includes both two-screw and four-screw devices in various footprints to provide **maximum flexibility** in meeting all patient needs. As a stand-alone device, Ventris ALIF is **implanted through a single incision** - promoting less trauma for the patient and saving valuable time for the surgical team.

KEY FEATURES	BENEFITS
Anterior Column Zero Profile	Reduces or eliminates potential for great vessel interference
Enhanced porous structure	Increases bone in-growth to endplate
Lag screws	Loads the graft compressively to promote fusion
Locking plate	Provides visual & audible confirmation of fully seated screw to prevent backout with break-off feature
Simple instrumentation	Enhances surgeon efficiency with comfortable handles

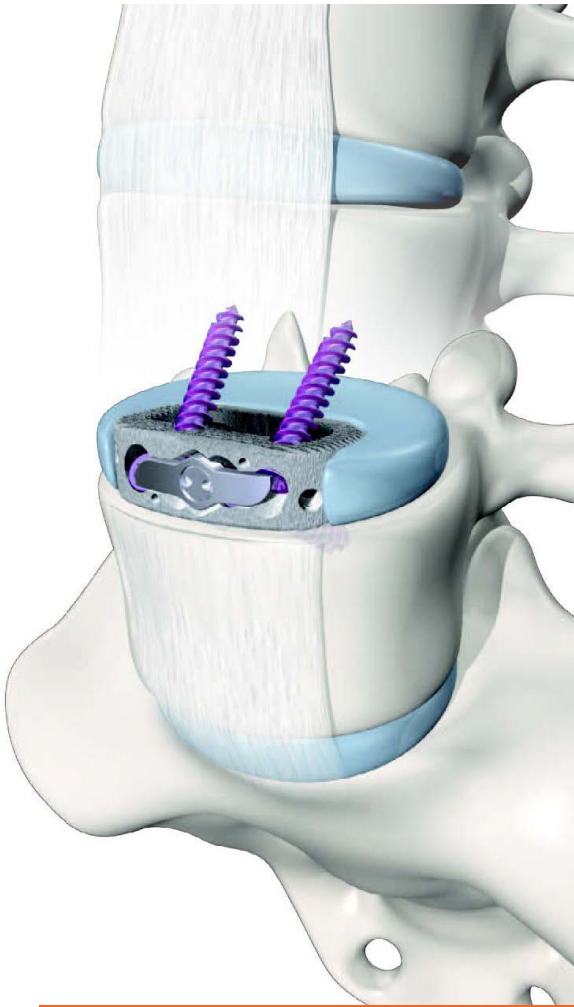


COVER PLATE



SCREWS

Diameter: 5.0 / 5.5
Length: 20 / 25 / 30 mm



Ventris ALIF surgical technique guide is available upon request

INDICATIONS FOR USE

The Ventris ALIF system is **indicated for intervertebral body fusion of the spine in skeletally mature patients who have had at least six months of non-operative treatment.** The device systems are designed for use with allogenic bone graft comprised of cancellous and/or corticocancellous bone graft and/or autograft to facilitate fusion. **One device is used per inter-vertebral body space.**

Ventris ALIF system is intended for use at either one level or two contiguous levels in the lumbar spine, from L2 to S1, for **the treatment of degenerative disc disease (DDD) with up to Grade I spondylolisthesis.** DDD is defined as back pain of discogenic origin with degeneration of the disc confirmed by history and radiographic studies.

Ventris ALIF 2-SCREW

Ventris ALIF 2-screw system may be used as a stand-alone device only when two (2) vertebral body bone screws are used.

Ventris ALIF 4-SCREW

Ventris ALIF 4-screw system may be used as a stand-alone device only when at least two (2) vertebral body bone screws are inserted in the two medial fixation holes with both inferior and superior screw trajectory.

Ventris ALIF LESS THAN 2 SCREWS

If the physician chooses to use Ventris ALIF system with fewer than two (2) screws in the two medial fixation holes with one inferior and one superior screw trajectory, then an additional supplemental spinal fixation system cleared for use in the lumbosacral spine must be used.



FOOTPRINTS

- XS: 32 x 21
- S: 32 x 24
- L: 36 x 26
- XL: 38 x 30

All footprints available in 2-screw configurations

UNITARY TITANIUM STANDARD SIZES

LORDOSIS	HEIGHT									
20°	-	-	-	-	-	15	16	17	18	19
16°	-	11	12	13	14	15	16	17	18	19
12°	10	11	12	13	14	15	16	17	18	19
7°	10	11	12	13	14	15	16	17	-	-



Ø27 MM Ventris FRA UNITARY TITANIUM STANDARD SIZES

LORDOSIS	HEIGHT										
20°	-	-	-	-	13	14	15	16	17	18	19
16°	-	-	-	-	13	14	15	16	17	18	19
12°	9	10	11	12	13	14	15	16	17	18	19
7°	9	10	11	12	13	14	15	16	17	18	19